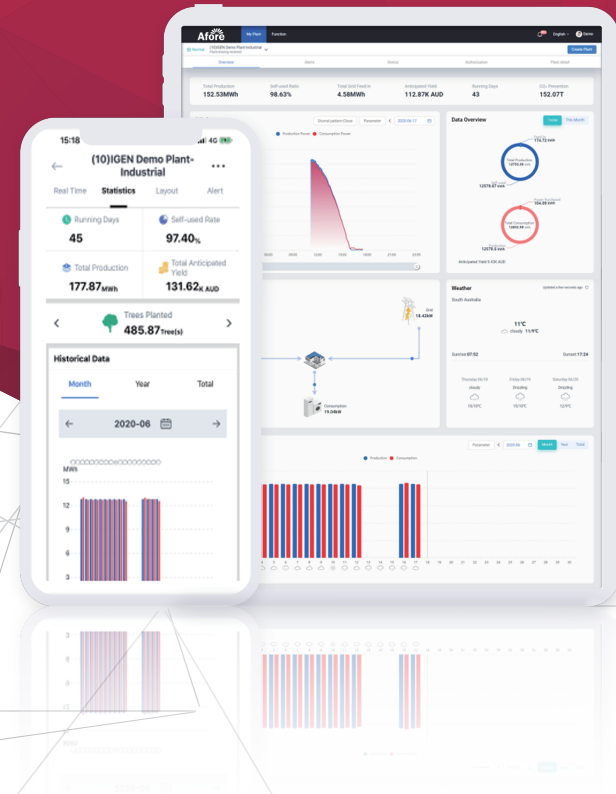


App User Manual

Afore Business APP

www.aforeenergy.com



Afore

Afore New Energy Technology (Shanghai) Co., Ltd.

T 86-21-54326236 F +86-21-54326136 E info@aforeenergy.com

Ad No.2755, Sanlu Rd. Minhang District, Shanghai, China. 201112

Afore

Afore New Energy Technology (Shanghai) Co., Ltd.

Contents

1. Download AFORE Business APP	1
2. Register a Business	1
3. Create a New Plant	2
3.1 Add a Gateway/Logger	5
4. Plant Created.	9

1. Download AFORE Business APP

Scan QR code below to download (Both for Android&iOS) .



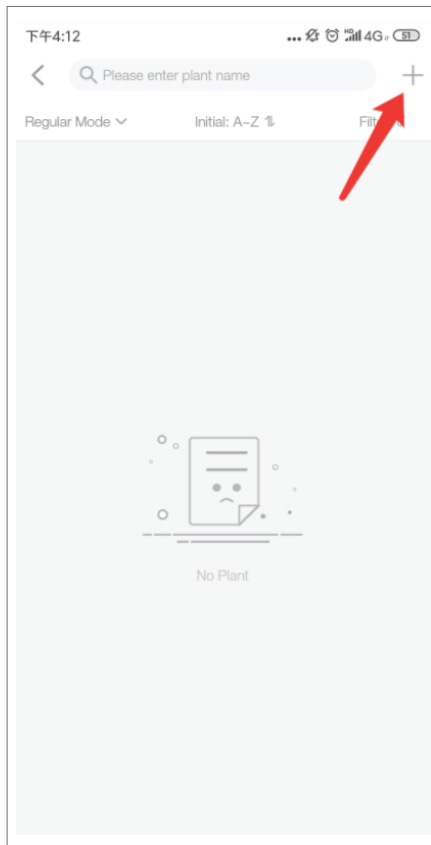
2. Register a Business

After download AFORE Business APP , click register to create a business

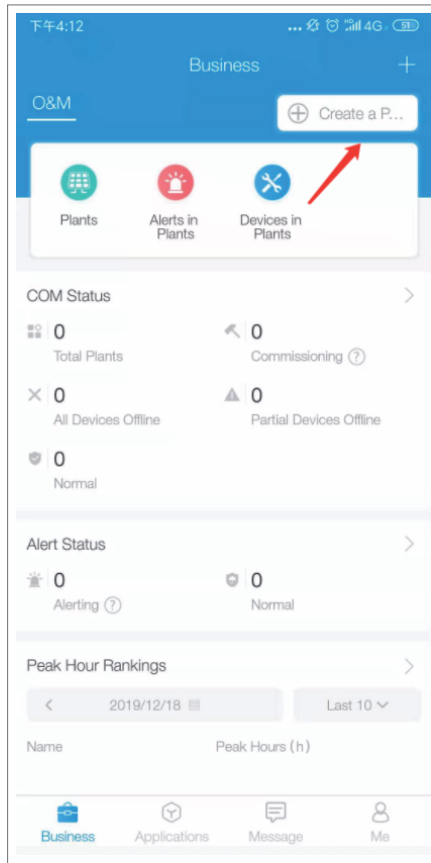
A screenshot of a mobile application registration screen. At the top, the time is 4:47 PM and there are icons for signal strength, Wi-Fi, and battery. Below the time, the word 'English' is displayed in blue. A text input field contains 'AFORE Business'. Below this, there are three tabs: 'E-mail' (selected with a blue underline), 'Phone', and 'Username'. Under the 'E-mail' tab, there are two input fields: 'E-mail' and 'Password(6-50 characters)'. Below the password field, there are two links: 'Register' and 'Forgot Password?'. At the bottom, there is a large blue rounded rectangular button with the text 'Log In'. At the very bottom of the screen, the text 'Current Version V1.4.2' is visible.

3. Create a New Plant

1. Log in to AFORE Business. (Super admin has full permissions. If other account wish to create a plant, please check its permission first.)
2. Method 1: Go to **【Business】** — **【O&M】** — **【Plant】** and click **【+】** in the upper right corner.



3. Method 2: Go to **Business** and click **[+ Create a Plant]** in the upper right corner.



4. Users can enter basic info, system info, yield info, owner info here. Plant name, location, region, address, coordinate, capacity, currency are required fields.

下午4:13
... 4G

Cancel
Create a Plant
Save

Basic Info

* Name Please enter

* Location Longitude 120°21'40"/Latitude 31°3... >

* Region Chin.../Jian.../Wuxi/Xinw... >

* Address Please enter

* Time Zone (UTC+08:00) Beijing,Chongqing,Ho... >

Creation Date 2019/12/18

System Info

* Plant Type Residential Rooftop >

* System Type All on Grid >

* Installed Capacity(kWp) Please enter

Azimuth(°) Please enter(0-360)

Angle of Tilt(°) Please enter(0-90)

* Commissioning Date ⓘ 2019/12/18 >

Yield Info

* Currency CNY >

Unit Price(CNY/kWh) Please enter

Total Cost(CNY) Please enter

Owner Info

Name Please enter

Contact Number Please enter

Working Company Please enter



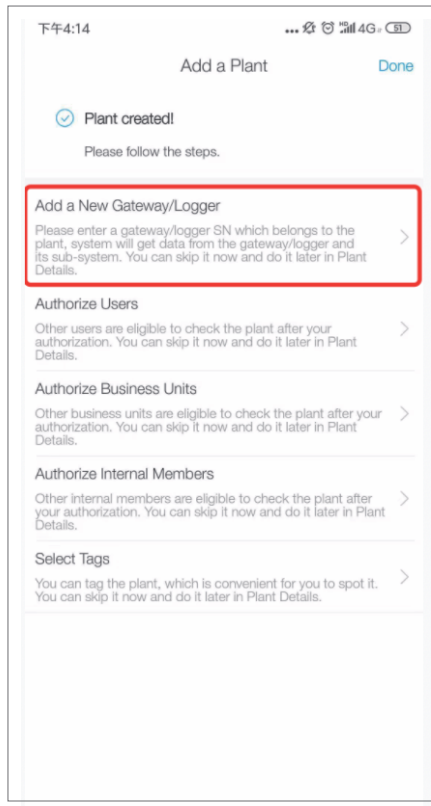
Note:

1. After the plant location is confirmed, system will confirm the region, coordinate, currency and time zone automatically.
2. System type includes All on Grid, Self-consumption, Energy Storage System. Different system type has different plant view. Please select the system type according to actual situation.
3. Capacity is a required field. Please enter the accurate capacity.

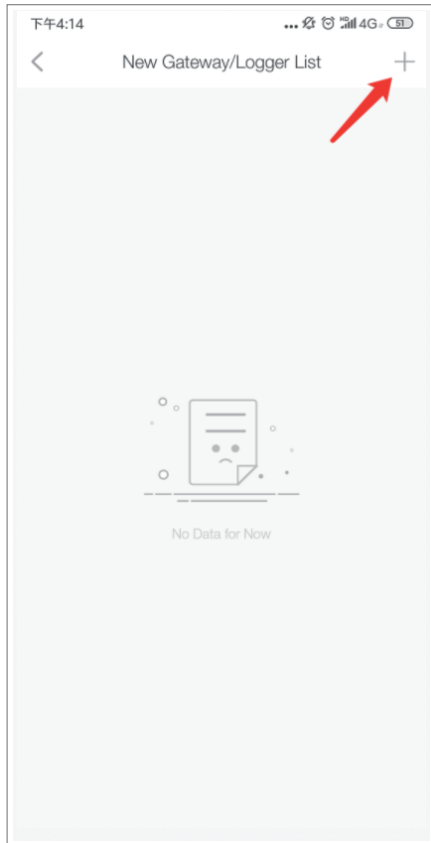
3.1 Add a Gateway/Logger

Please enter gateway/logger SN belongs to the plant. System will count data according to gateway/logger and its sub-device.

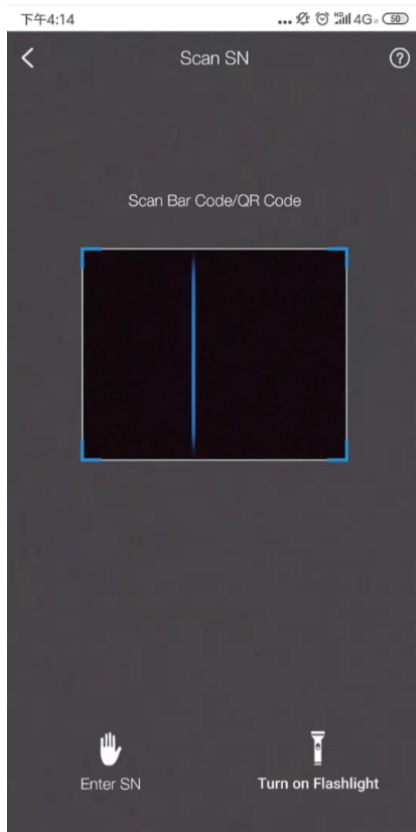
1. After entering the plant info, click save. Then go to **【Add a New Gateway/Logger】**



2. Go to **【New Gateway/Logger List】** and click **【+】** in the upper-right corner.



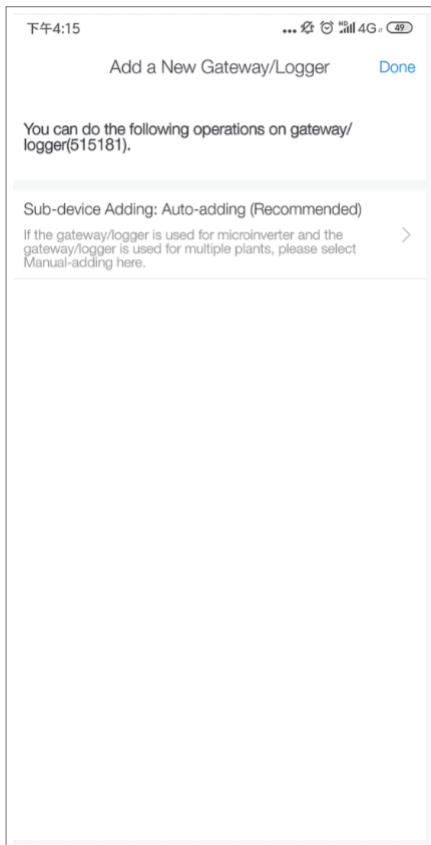
3. Scan bar code/QR code of gateway/logger here.



Note:

- If you cannot find gateway/logger SN, please click **【?】** in the upper-right corner.
- If there is no bar code/QR code or the bar code/QR code is borken, please go to **【Enter SN】** in the lower-left corner.
- If it is in low-light conditions, please click **【Turn on Flashlight】** .

4. After scanning the gateway/logger SN, click **【Done】** to finish.



4. Plant Created

After adding a gateway/logger and authorizing a plant, back to the page below. Click **Done** in the upper-right corner. System will go to Plant Details automatically. If the gateway and its sub-device are networked, users can check the data around 10 mins.

